

Strategic Plan 2018-2022



Report Back to Board – March 2018

Our Vision, Mission and Strategic Priorities

Vision:

Better health outcomes for seniors living with or at risk for frailty in the Central East LHIN

Mission:

Working as a coordinated network of senior friendly, high quality systems of health care that address complexity and optimize quality of life.

Strategic Priorities

Innovation

Excellence

Advocacy

Strategic Priorities and Goals

Innovation

Partners collaborating to generate and advance knowledge and approaches to high quality specialized geriatric care.

Excellence

SGS delivering high quality care, tailored to individual needs, and founded on evidence-informed, senior friendly principles & practices.

Advocacy

The Network influencing senior friendly and specialized geriatrics' policy and practice regionally and provincially.

Strategic Priorities

Strategic Objectives

Innovation

- Engage meaningfully with citizens
- Generate knowledge (e.g. research, new tools, practices and process)
- Create new regional models/programs for geriatric care

Excellence

- Implement evidence informed practices and processes
- Conduct rigorous quality improvement and evaluation

Advocacy

- Proactively partner and collaborate across the continuum of senior friendly care
- Raise the profile of the region, the network, its members and persons living with or at risk of frailty and their care partners
- Influence and develop senior friendly and specialized geriatrics' policy

Seniors Care Network DRIVER DIAGRAM

Mission (Aim)

Strategic Priorities & Goals

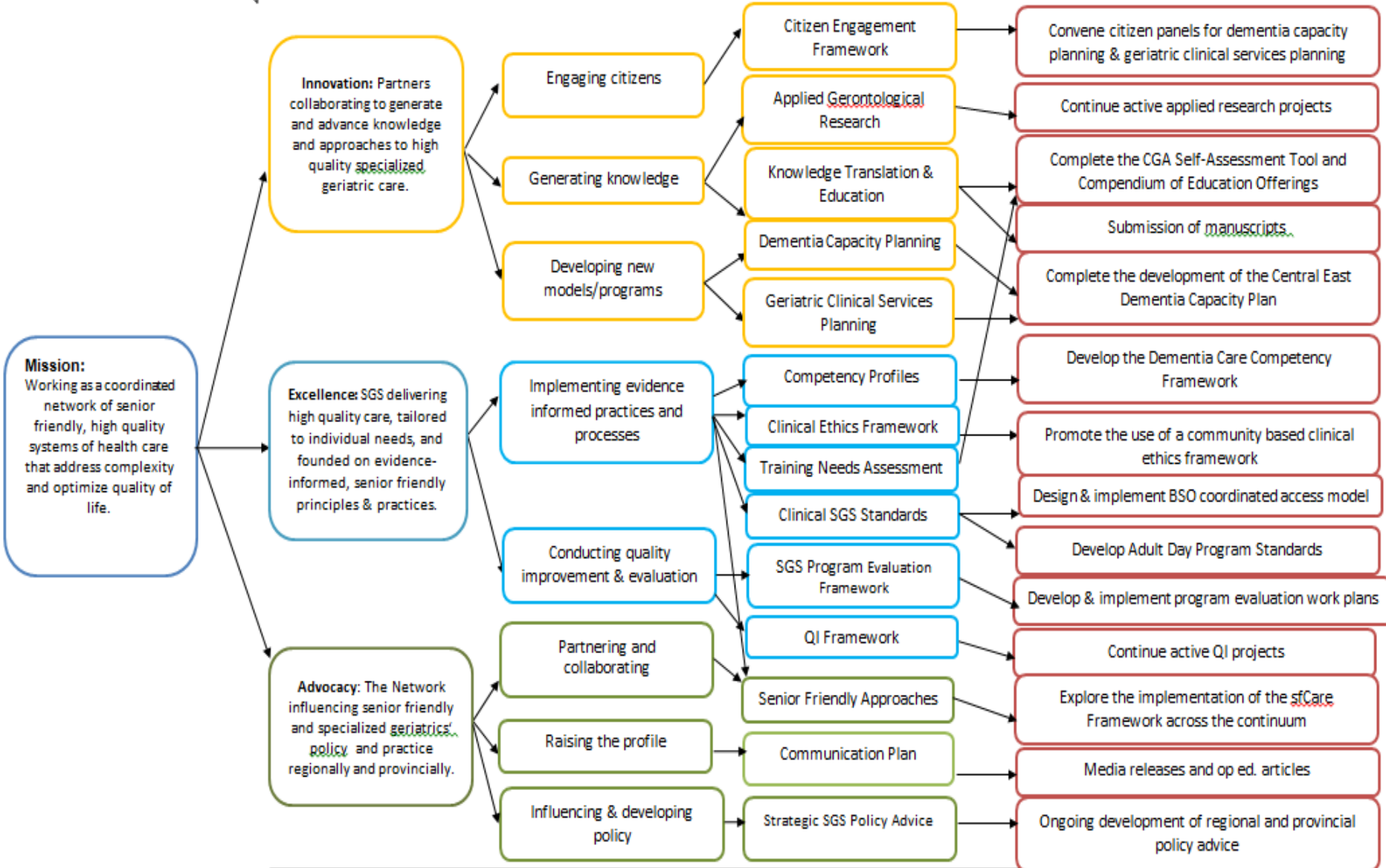
Objectives

Initiatives

2018/19 Activities

WHY

HOW



Seniors Care Network Program Logic Model and 2018/19 Work Plan

Working as a coordinated network of senior friendly, high quality systems of health care that address complexity and optimize quality of life.

Process Side				Outcomes Side (Answers "so what")	2018/19 Work Plan (Answers "how")
Inputs	Activities	Audiences (Target Group)	Outputs (Evidence)	Outcomes	Initiatives
Individuals Board Seniors Care Network Staff Program Staff Students Consultants SGS Funding LHIN Accountability Agreements Community Partners Health Policy & Legislation Access to research Office space/materials Enabling Technology	Innovation Engaging citizens Generating knowledge Developing new models/programs	Individuals Program Leads & Staff Academic partners RGP of Ontario	# of citizen engagement opportunities # active research projects % completed CGA self-assessment tool and compendium # of papers/manuscripts produced % Completed Dementia Capacity Plan # of Completed caregiver education modules	Partners collaborating to generate and advance knowledge and approaches to high quality specialized geriatric care.	1. Convene citizen panels for dementia capacity planning & geriatric clinical services planning 2. Continue active applied research projects 3. Complete the CGA Self-Assessment Tool and Compendium of Education Offerings 4. Submission of manuscripts 5. Complete the development of the Central East Dementia Capacity Plan 6. Co-develop Caregiver Education for caregivers of individuals living with frailty
	Excellence Implementing evidence informed practices and processes Conducting quality improvement & evaluation	Program Staff Host organizations Central East LHIN	% completed Dementia Care competency framework # of promotional/education opportunities r/t community ethics % completed BSO coordinated access model % completed ADP program standards % completed program evaluations # QI projects	SGS delivering high quality care, tailored to individual needs, and founded on evidence-informed, senior friendly principles & practices.	7. Develop the Dementia Care Competency Framework 8. Promote the use of a community based clinical ethics framework 9. Design & implement BSO coordinated access model 10. Develop Adult Day Program Standards 11. Develop & implement program evaluation work plans 12. Continue active quality improvement (QI) projects
	Advocacy Partnering and collaborating Raising the profile Influencing & developing policy	Health, Social Service & Community Partners Older people living with frailty and their families & General Public Policy Makers	# new sites taking up the sfCare framework # media releases/op-ed pieces # policy documents	The Network influencing senior friendly and specialized geriatrics' policy and practice regionally and provincially	13. Explore the implementation of the sfCare Framework across the continuum 14. Media releases and op ed. articles 15. Ongoing development of regional and provincial policy advice



Appendix

Definitions

Definitions

Systems of Health Care

Organizations and formal and informal networks of organizations that deliver health and social care services to meet the needs of a population

Health

“not merely the absence of disease or infirmity but a state of complete physical, mental and social well-being” (World Health Organization, 1948).

Coordinated

The outcome achieved by collaborating organizations, programs, interprofessional teams and individual health professionals, who work in concert to provide a seamless care experience for patients and care partners.

Definitions (continued): Quality of Life

Seniors Care Network defines quality of life as consistent with the principles of the “Aging with Confidence: Action Plan for Seniors” (MOHLTC, 2017). This means a life in which one:

- feels included, safe and secure;
- has the highest potential for choice and self-determination; and,
- can access services that are respectful of diversity

It also means a life that is marked by optimal function (e.g. mobility and ability to accomplish activities of daily living), and limited pain, depression and loneliness* .

* See “Outcomes” in International Consortium for Health Outcomes Measurement, Older Person Reference Guide, 2016, p. 5